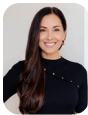




Malia Ohana Farms, Holualoa, Big Island

MLS# 716446 | \$1,150,000 fs | 35.56 acres & MLS# 716447 | \$875,000 fs | 20.02 acres

Malia Ohana Farms is comprised of two parcels of prominent coffee farmland in the Kona region on Hawai'i Island, renowned for its premium Kona coffee production. Situated at an elevation of 2,800 feet, the farmland presents an exceptional opportunity for agricultural investment or private ownership. Malia Ohana Farms offers a rare opportunity to own a legacy property in one of the world's most sought-after coffee regions. With a combination of producing acreage, residential comfort, and sustainable development potential, it's primed to carry on Kona's rich agricultural tradition.



Carrie Nicholson REALTOR(B), RB-19302
808.896.9749 | Carrie@HawaiiLife.com



Zion Nicholson REALTOR(S), RS-84674
808.756.2011 | ZionNicholson@HawaiiLife.com



HawaiiLife.com Main Office: 800.667.5028

Local Office: 69-201 Waikoloa Beach Dr #505, Waikoloa, HI 96738